



**MACHINES
D'ASSEMBLAGE
DE TUYAUX
HYDRAULIQUES**

Balflex® 



INDEX

P16_HP ENERPAC MANUAL PUMP CRIMPING MACHINE 1"	2
P16_AP ENERPAC AIR PUMP CRIMPING MACHINE 1"	3
P20_HP ENERPAC MANUAL PUMP CRIMPING MACHINE 1.1/2"	4
P20_AP ENERPAC AIR PUMP CRIMPING MACHINE 1.1/2"	5
P20_CS 12V BATTERY CRIMPING MACHINE 1.1/2"	6
P20 ELECTRIC CRIMPING MACHINE 1.1/2"	7
P32 ELECTRIC CRIMPING MACHINE 2"	8
P32D ELECTRIC CRIMPING MACHINE 2" with PLC Control	9
P120 ELECTRIC CRIMPING MACHINE 2" with PLC Control	10
V100 LOW PRESSURE CRIMPING MACHINE	11
SK50 ELECTRIC SKIVING MACHINE 2"	11
CM50 ELECTRIC CUTTING MACHINE 2"	12
CM400 ELECTRIC CUTTING MACHINE UP TO 2" SIX SPIRALS	13
CM400_AP ELECTRIC CUTTING MACHINE UP TO 2" SIX SPIRALS WITH PNEUMATIC INPUT	13
90.DM.6 HOSE REEL 6 PLATES	14

P16_HP

ENERPAC MANUAL PUMP CRIMPING MACHINE 1"

TECHNICAL DATA	
Crimping range (mm)	10-45
Crimping force (kN)	955
Crimping force (tons)	95
Hose size (inches)	2 Wire DN25 - 1"
Die set	P16
Max. opening (mm)	+20
Master die D/L (mm)	39/64
Control	Manual Gauge
Operation	Enerpac Hand Pump
Length (mm)	331
Width (mm)	401
Height (mm)	271
Total Weight (kg)	33



Option model 90.P16_HPZ



PART NUMBER	P16/6.8	P16/8	P16/10	P16/12	P16/14*	P16/16*	P16/19*	P16/23*	P16/27*	P16/31*
CRIMPING RANGE (mm)	6.8-8.8	8.0-10.0	10.0-12.0	12.0-14.0	14.0-16.0	16.0-19.0	19.0-23.0	23.0-27.0	27.0-31.0	31.0-36.0
D (mm)	6.8	8	10	12	14	16	19	23	27	31
L (mm)	25	25	55	55	55	55	55	55	70	70

* Standard die sets included; other are optional



P16_AP

ENERPAC AIR PUMP CRIMPING MACHINE 1"

TECHNICAL DATA	
Crimping range (mm)	10-45
Crimping force (kN)	955
Crimping force (tons)	137
Hose size (inches)	2 Wire DN25 - 1"
Die set	P16
Max. opening (mm)	+20
Master die D/L (mm)	39/64
Control	Manual Gauge
Operation	Enerpac Air Pump
Length (mm)	331
Width (mm)	401
Height (mm)	271
Total Weight (kg)	38



PART NUMBER	P16/6.8	P16/8	P16/10	P16/12	P16/14*	P16/16*	P16/19*	P16/23*	P16/27*	P16/31*
CRIMPING RANGE (mm)	6.8-8.8	8.0-10.0	10.0-12.0	12.0-14.0	14.0-16.0	16.0-19.0	19.0-23.0	23.0-27.0	27.0-31.0	31.0-36.0
D (mm)	6.8	8	10	12	14	16	19	23	27	31
L (mm)	25	25	55	55	55	55	55	55	70	70

* Standard die sets included; other are optional

P20_HP

ENERPAC MANUAL PUMP CRIMPING MACHINE 1.1/2"

TECHNICAL DATA	
Crimping range (mm)	10-61
Crimping force (kN)	1370
Crimping force (tons)	137
Hose size (inches)	2 Wire Braid 1.1/2" (DN38) / 4 Spirals 1.1/4" (DN31)
Diet set	P20
Max. opening (mm)	+25
Master die D/L (mm)	84/80
Control	Manual Gauge
Operation	Enerpac Hand Pump
QC tool	Included
Length (mm)	550
Width (mm)	380
Height (mm)	380
Total Weight (kg)	102



PART NUMBER	P20/6.8	P20/8	P20/10	P20/12	P20/14**	P20/16**	P20/19**	P20/23**	P20/27**	P20/31**	P20/36**	P20/41**	P20/47**	P20/54
CRIMPING RANGE (mm)	6.8-8.8	8.0-10.0	10.0-12.0	12.0-14.0	14.0-16.0	16.0-19.0	19.0-23.0	23.0-27.0	27.0-31.0	31.0-36.0	36.0-41.0	41.0-47.0	47.0-54.0	54.0-61.0
D (mm)	6.8	8	10	12	14	16	19	23	27	31	36	41	47	54
L (mm)	25	25	55	55	55	55	55	55	70	70	75	75	85	85

* Standard die sets included; other are optional

ACCESSORIES

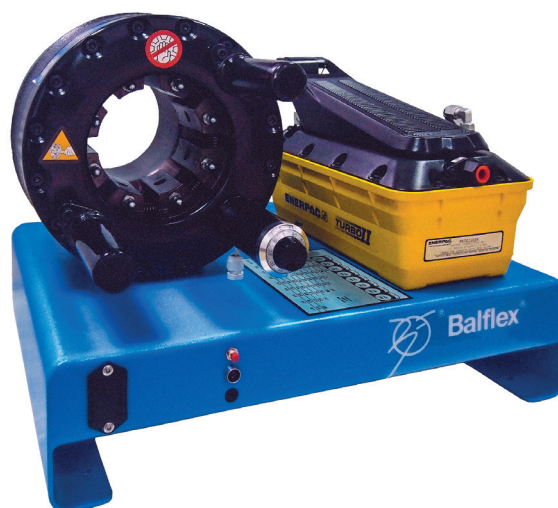




P20_AP

ENERPAC AIR PUMP CRIMPING MACHINE 1.1/2"

TECHNICAL DATA	
Crimping range (mm)	10-61
Crimping force (kN)	1370
Crimping force (tons)	137
Hose size (inches)	2 Wire Braid 1.1/2" (DN38) / 4 Spirals 1.1/4" (DN31)
Die set	P20
Max. opening (mm)	+25
Master die D/L (mm)	84/80
Control	Manual Gauge
Operation	Enerpac Air Pump
QC tool	Included
Length (mm)	550
Width (mm)	380
Height (mm)	380
Total Weight (kg)	105



PART NUMBER	P20/6.8	P20/8	P20/10	P20/12	P20/14*	P20/16*	P20/19*	P20/23*	P20/27*	P20/31*	P20/36*	P20/41*	P20/47*	P20/54
CRIMPING RANGE (mm)	6.8-8.8	8.0-10.0	10.0-12.0	12.0-14.0	14.0-16.0	16.0-19.0	19.0-23.0	23.0-27.0	27.0-31.0	31.0-36.0	36.0-41.0	41.0-47.0	47.0-54.0	54.0-61.0
D (mm)	6.8	8	10	12	14	16	19	23	27	31	36	41	47	54
L (mm)	25	25	55	55	55	55	55	55	70	70	75	75	85	85

* Standard die sets included; other are optional

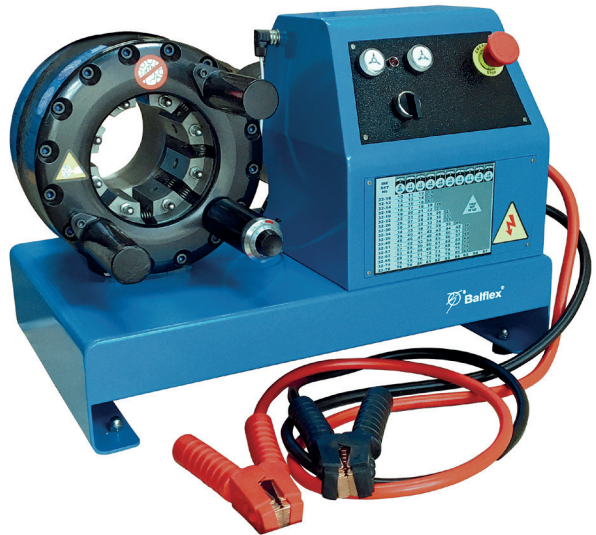
ACCESSORIES



P20_CS

12V BATTERY CRIMPING MACHINE 1.1/2"

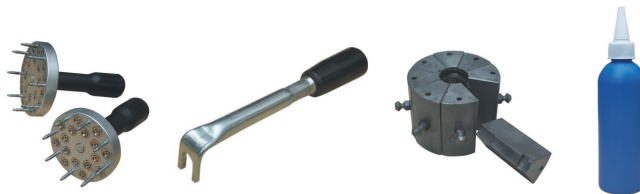
TECHNICAL DATA	
Crimping range (mm)	10-61
Crimping force (kN)	1370
Crimping force (tons)	137
Hose size (inches)	2 Wire Braid 1.1/2" (DN38) / 4 Spirals 1.1/4" (DN31)
Diet set	P20
Max. opening (mm)	+25
Master die D/L (mm)	84/80
Control	Manual Gauge
Operation	12V / 210A Battery
QC tool	Included
Length (mm)	550
Width (mm)	380
Height (mm)	380
Total Weight (kg)	105



PART NUMBER	P20/6.8	P20/8	P20/10	P20/12	P20/14*	P20/16*	P20/19*	P20/23*	P20/27*	P20/31*	P20/36*	P20/41*	P20/47*	P20/54
CRIMPING RANGE (mm)	6.8-8.8	8.0-10.0	10.0-12.0	12.0-14.0	14.0-16.0	16.0-19.0	19.0-23.0	23.0-27.0	27.0-31.0	31.0-36.0	36.0-41.0	41.0-47.0	47.0-54.0	54.0-61.0
D (mm)	6.8	8	10	12	14	16	19	23	27	31	36	41	47	54
L (mm)	25	25	55	55	55	55	55	55	70	70	75	75	85	85

* Standard die sets included; other are optional

ACCESSORIES





P20

ELECTRIC CRIMPING MACHINE 1.1/2"

TECHNICAL DATA	
Crimping range (mm)	10-61
Crimping force (kN)	1370
Crimping force (tons)	137
Crimpings/hour	600/850
Noise Level (db(A))	71
Hose size (inches)	2 Wire Braid 1.1/2" (DN38) / 4 Spirals 1.1/4" (DN31)
Die set	P20
Max. opening (mm)	+25
Master die D/L (mm)	84/80
Control	Manual Gauge
Motor (kW)	3
Motor (HP)	4
Voltage (V)*	380 Tri-phasic
QC tool	Included
Pedal	Included
Die Set Rack	Included
Length (mm)	760
Width (mm)	560
Height (mm)	800
Total Weight (kg)	182

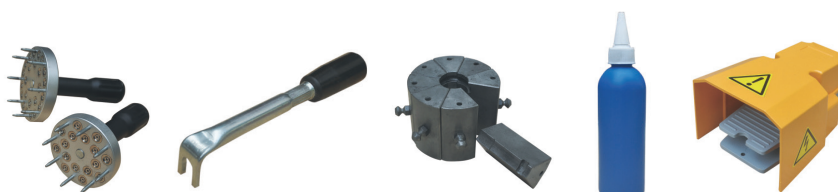


PART NUMBER	P20/6.8	P20/8	P20/10	P20/12	P20/14**	P20/16**	P20/19**	P20/23**	P20/27**	P20/31**	P20/36**	P20/41**	P20/47**	P20/54
CRIMPING RANGE (mm)	6.8-8.8	8.0-10.0	10.0-12.0	12.0-14.0	14.0-16.0	16.0-19.0	19.0-23.0	23.0-27.0	27.0-31.0	31.0-36.0	36.0-41.0	41.0-47.0	47.0-54.0	54.0-61.0
D (mm)	6.8	8	10	12	14	16	19	23	27	31	36	41	47	54
L (mm)	25	25	55	55	55	55	55	55	70	70	75	75	85	85

* Other voltage on request

** Standard die sets included; other are optional

ACCESSORIES



P32

ELECTRIC CRIMPING MACHINE 2"

TECHNICAL DATA	
Crimping range (mm)	10-87
Crimping force (kN)	2000
Crimping force (tons)	200
Crimpings/hour	700/850
Noise Level (db(A))	71
Hose size (inches)	2 Wire Braid 2" (DN51) / 4 Spirals 2" (DN51)
Die set	P32
Max. opening (mm)	+33
Master die D/L (mm)	99/80
Control	Manual Gauge
Motor (kW)	4
Motor (HP)	5.3
Voltage (V)*	380 Tri-phasic
QC tool	Included
Pedal	Included
Die Set Rack	Included
Length (mm)	760
Width (mm)	560
Height (mm)	800
Total Weight (kg)	265

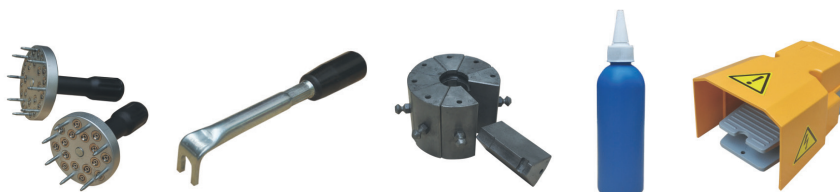


PART NUMBER	P32/6.8	P32/8	P32/10	P32/12	P32/14 **	P32/16 **	P32/19 **	P32/22 **	P32/26 **	P32/30 **	P32/34 **	P32/39 **	P32/45 **	P32/51 **	P32/57 **	P32/63 **	P32/69 **	P32/74	P32/78
CRIMPING RANGE (mm)	6.8-8.8	8.0-10.0	10.0-12.0	12.0-14.0	14.0-16.0	16.0-19.0	19.0-23.0	22.0-26.0	26.0-30.0	30.0-34.0	34.0-39.0	39.0-45.0	45.0-51.0	51.0-57.0	57.0-63.0	63.0-69.0	69.0-75.0	74.0-80.0	78.0-87.0
D (mm)	6.8	8	10	12	14	16	19	22	26	30	34	39	45	51	57	63	69	74	78
L (mm)	25	25	55	55	55	55	55	70	70	70	75	75	90	90	100	110	110	110	110

* Other voltage on request

** Standard die sets included; other are optional

ACCESSORIES





P32D

ELECTRIC CRIMPING MACHINE 2" with Digital Display (PLC) and Control

TECHNICAL DATA	
Crimping range (mm)	10-87
Crimping force (kN)	2000
Crimping force (tons)	200
Crimpings/hour	700/850
Noise Level (db(A))	71
Hose size (inches)	2 Wire Braid 2" (DN51) / 4 Spirals 2" (DN51)
Die set	P32
Max. opening (mm)	+33
Master die D/L (mm)	99/80
Control	PLC (Siemens) Language free - Graphic Symbols
Siemens Motor (kW)	4
Siemens Motor (HP)	5.3
Voltage (V)*	380 Tri-phasic
QC tool	Included
Pedal	Included
Die Set Rack	Included
Length (mm)	760
Width (mm)	560
Height (mm)	800
Total Weight (kg)	265

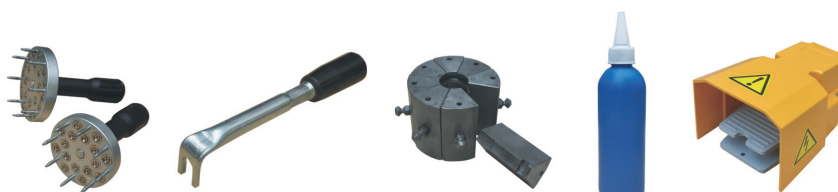


PART NUMBER	P32/6.8	P32/8	P32/10	P32/12	P32/14 **	P32/16 **	P32/19 **	P32/22 **	P32/26 **	P32/30 **	P32/34 **	P32/39 **	P32/45 **	P32/51 **	P32/57 **	P32/63 **	P32/69 **	P32/74	P32/78
CRIMPING RANGE (mm)	6.8-8.8	8.0-10.0	10.0-12.0	12.0-14.0	14.0-16.0	16.0-19.0	19.0-23.0	22.0-26.0	26.0-30.0	30.0-34.0	34.0-39.0	39.0-45.0	45.0-51.0	51.0-57.0	57.0-63.0	63.0-69.0	69.0-75.0	74.0-80.0	78.0-87.0
D (mm)	6.8	8	10	12	14	16	19	22	26	30	34	39	45	51	57	63	69	74	78
L (mm)	25	25	55	55	55	55	55	70	70	70	75	75	90	90	100	110	110	110	110

* Other voltage on request

** Standard die sets included; other are optional

ACCESSORIES



P120

ELECTRIC CRIMPING MACHINE up to R15 Hose - 2" with Digital Display (PLC) and Control

TECHNICAL DATA	
Crimping range (mm)	10-87
Crimping force (kN)	2800
Crimping force (tons)	280
Crimpings/hour	3000 (on 1/2")
Noise Level (db(A))	71
Hose size (inches)	2 Wire Braid 2" (DN51) / 6 Spirals 2" (DN51)
Die set	P32
Max. opening (mm)	66
Master die D/L (mm)	99/97
Control	PLC (Siemens) Language free - Graphic Symbols
Siemens Motor (kW)	5.5
Siemens Motor (HP)	7.5
Voltage (V)*	380 Tri-phasic
Quick Change (QC) tool	Included
Foot Pedal	Included
Die Set Rack	Included
Back Stop	Included
Dimensions / crimping unit (mm)	length 940 width 800 height 1635
Dimensions / hydraulic unit (mm)	length 820 width 640 height 992
Total Weight (kg) (without Oil)	1150
Oil Tank capacity (liter)	140

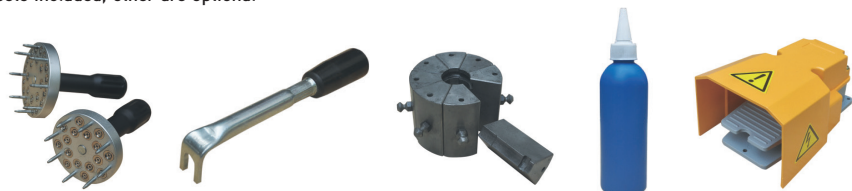


PART NUMBER	P32/6.8	P32/8	P32/10	P32/12	P32/14 **	P32/16 **	P32/19 **	P32/22 **	P32/26 **	P32/30 **	P32/34 **	P32/39 **	P32/45 **	P32/51 **	P32/57 **	P32/63 **	P32/69 **	P32/74 **	P32/78
CRIMPING RANGE (mm)	6.8-8.8	8.0-10.0	10.0-12.0	12.0-14.0	14.0-16.0	16.0-19.0	19.0-23.0	22.0-26.0	26.0-30.0	30.0-34.0	34.0-39.0	39.0-45.0	45.0-51.0	51.0-57.0	57.0-63.0	63.0-69.0	69.0-75.0	74.0-80.0	78.0-87.0
D (mm)	6.8	8	10	12	14	16	19	22	26	30	34	39	45	51	57	63	69	74	78
L (mm)	25	25	55	55	55	55	55	70	70	70	75	75	90	90	100	110	110	110	110

* Other voltage on request

** Standard die sets included; other are optional

ACCESSORIES





V100

LOW PRESSURE CRIMPING MACHINE

TECHNICAL DATA	
Crimping range (mm)	9-30mm
Diet set	2 sets (DN3-8 ; DN10-16)
Operation	Manual
Length (mm)	350
Width (mm)	235
Height (mm)	760
Total Weight (kg)	17,5



SK50

ELECTRIC SKIVING MACHINE 2"

TECHNICAL DATA	
Internal Skiving Range	3/4" (DN19) - 2" (DN51)
External Skiving Range	1/4" (DN6) - 2" (DN51)
Internal Skiving tools	6
External Skiving tools	10
Speed of Tool Rotation (r/min)	145
Motor (kW)	0.4
Motor (HP)	0.53
Voltage (V)*	380 Tri-phasic
Noise Level (db(A))	55
Pedal	Included
Length (mm)	400
Width (mm)	300
Height (mm)	1050
Total Weight (kg)	57



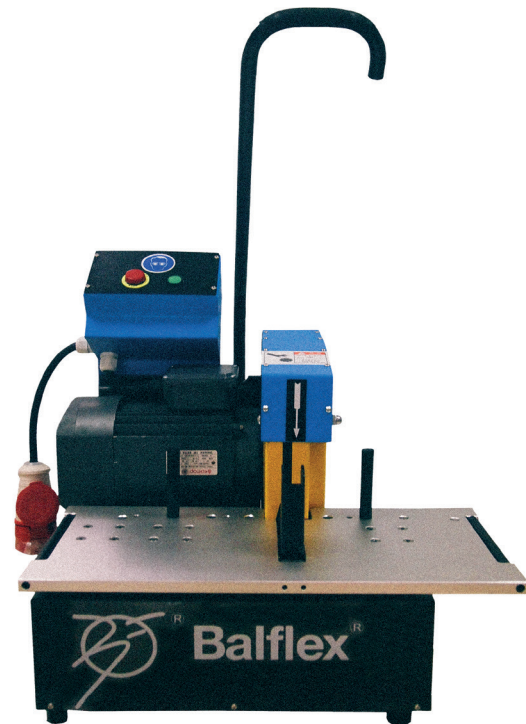
* Other voltage on request

CM50

ELECTRIC CUTTING MACHINE 2"

TECHNICAL DATA	
Serrated Blade (mm)	300X4.5X32
Frequency 50Hz (rpm)	2850
Frequency 60Hz (rpm)	3370
Motor (kW)	4
Motor (HP)	5.3
Voltage (V)*	380 Tri-phasic
Noise Level (db(A))	65
Length (mm)	545
Width (mm)	550
Height (mm)	580
Total Weight (kg)	78

* Other voltage on request





CM400

ELECTRIC CUTTING MACHINE UP TO 2" SIX SPIRALS

TECHNICAL DATA	
Serrated Blade (mm)	400X4.0X50
Frequency 50Hz (rpm)	2850
Frequency 60Hz (rpm)	3370
Motor (kW)	5.5
Motor (HP)	7.5
Voltage (V)*	380 Tri-phasic
Noise Level (db(A))	65
Length (mm)	750
Width (mm)	760
Height (mm)	1200
Total Weight (kg)	195

* Other voltage on request



CM400_AP

ELECTRIC CUTTING MACHINE UP TO 2" SIX SPIRALS WITH PNEUMATIC INPUT

TECHNICAL DATA	
Serrated Blade (mm)	400X4.0X50
Frequency 50Hz (rpm)	2850
Frequency 60Hz (rpm)	3370
Pneumatic input Min. (Bar)	4
Motor (kW)	5.5
Motor (HP)	7.5
Voltage (V)*	380 Tri-phasic
Noise Level (db(A))	65
Length (mm)	1020
Width (mm)	660
Height (mm)	1380
Total Weight (kg)	197

* Other voltage on request



90.DM.6

HOSE REEL 6 PLATES

MODEL	90.DM.6
Dimensions	1850 x 1000 x 12000mm
Total Weight	117 kg
Basket Dimensions	1100 x 120mm
Total Loading Weight	600 kg

* Other design on request



GARANTIE LIMITÉE DES PRODUITS

Les produits vendus par Balflex® sont garantis à nos clients contre tout défaut de matériau et de fabrication lors de l'expédition dans les entrepôts Balflex®.

Toutes les réclamations au titre de la garantie doivent être présentées par écrit à Balflex®. La responsabilité de Balflex® en vertu des présentes est limitée au prix d'achat de la marchandise s'avérant défectueuse ou, à la seule discrétion de Balflex, au remplacement de cette marchandise lors de son retour autorisé à Balflex®.

Cette garantie remplace et exclut toutes les autres garanties ou conditions expresses, implicites, statutaires ou autrement créées en vertu de la loi applicable, y compris, mais sans s'y limiter, la garantie de qualité marchande et la garantie d'adéquation à un usage particulier.

De plus, cette garantie ne s'appliquera pas et sera nulle et non avenue à tout produit ou partie de celui-ci qui a fait l'objet d'un abus, d'une mauvaise utilisation, d'une installation, d'un entretien ou d'un fonctionnement inappropriés, d'une panne électrique ou de conditions anormales et aux produits qui ont été altérés, altéré, modifié, réparé, retravaillé par toute personne non approuvée par balflex ou utilisé de toute autre manière incompatible avec les instructions ou spécifications de Balflex®. Balflex® décline toute responsabilité pour les assemblages de tuyaux qui n'ont pas été produits conformément aux recommandations et pièces d'assemblage Balflex®.

En aucun cas balflex ne pourra être tenu responsable envers quiconque, y compris, sans limitation, tout acheteur immédiat, acheteur ou autre tiers, pour tout dommage spécial, punitif, accessoire ou consécutif, y compris, sans limitation, perte de profit ou perte de client, perte ou dommages à la propriété physique du client ou de toute autre personne et perte de revenus anticipés, de bénéfices, de clientèle, d'économies ou autre perte économique du client ou de toute autre personne.

Spécification sujette à changement sans préavis.

Erreurs et omissions exclues.



SOCAH CONNECTIC

668 rue de Cornouaille
ZA du Petit Bois
44522 MESANGER
Tél : (+33) 2 40 96 20 39
contact@socah-connectic.fr

An ISO 9001:2015 Company:

